

**Rose Valley Borough Environmental Advisory Council Meeting Minutes**

Date: 4/27/2021

Time: 7:30-10 PM

Location: Zoom Meeting

**Attendees (EAC Members):**

Monica Gagliardi, Chair

Leonard Busby (Acting Chair)

Roger Latham

Ron Ploeg

Jim Audley

Chris Bourke

Katie Rubin

**Borough Council EAC Liaison:**

Dave Firm

**EAC Associate Members:**

Cynthia (Cindy) McPherson

**Rose Valley Borough**

Bill Hale, Rose Valley Borough Council, President

Debra DeMasi, Rose Valley Borough Council

Vippy Yee (Zoom Host and Rose Valley Borough Council)

Joe Hare, Rose Valley Borough Council, Treasurer

Stephanie Middleton, Rose Valley Borough Council

Paula Healy, Rose Valley Borough Manager

Guy Smith, Rose Valley Borough Solicitor

Sue Keilbaugh

Mike Hagan

John Baycich

Kelly Caulfield

John Caldwell

Maggie Dee

Tim Plummer

David Shaw



Shane Houseman, Rose Valley Borough Intern  
Marilyn Bullock  
Carl Breithart

1. **Call to Order** Leonard called the meeting to order at 7:30 PM.
2. **Update of Borough website** Vippy introduced Shane Houseman, a Penn State sophomore IT intern, who helped to build out the new Rose Valley website, including the pages devoted to the EAC. The next step will be to add additional content. Within the EAC pages, Monica will continue as the point person with the assistance of Marilyn Bullock in creating relevant pages and curating appropriate content including a description of the preserves and their history. The EAC formally thanked Shane for his efforts.
3. **Minutes** The minutes from the March 23<sup>rd</sup> meeting were approved.
4. **Native Plant Sale Update** Cindy McPherson announced that the plant sale was a *great success with a profit of approximately \$760. The plants were sold out.* Plant material and supplies at \$2,200 were slightly over the \$2,000 budget, however, some of the supplies will be available next year. She thanked Monica for her work on the flyer, the new cloth sign was an improvement, as were the leis for volunteers. Next year Cindy hopes to make improvements for signage along Rose Valley Road, add a featured plant, continue with the "Donation Jar" for EAC planting initiatives in the preserves, and include QR codes on the plants that link to important information about the selection. Deirdre Wilson has agreed to be co-coordinator next year. Roger's walk and talk on invasives was again very successful with over 20 attending the two sessions and pulling and bagging Garlic Mustard and disposing of it in the Old Mill dumpster. Leonard agreed to write a thank you letter to the Rose Valley Gardeners on behalf of the EAC.
5. **Saul's Roost Plantings** Jim Audley reported that twelve shade tolerant trees were successfully planted in the understory of the Saul Preserve. The effort included an estimated total of 225 man/woman hours and 11 volunteers. Half of the trees were balled and burlapped and weighed 250 lbs each. They were carried through the woods and planted over a 300 square yard area. A motion was made and a motion was passed to reimburse Jim Audley for his expenses in the amount of \$1,507.39. Watering schedule to be developed and additional invasive pulling of invasives to be continued utilizing a weed wrench.
6. **Stream Crossing Proposal** Ron Ploeg reported that the proposal is on hold as the Borough Solicitor evaluates deed and use restrictions relating to the Saul and Chadwick Preserves. Guy Smith stated that he had yet to complete his analysis. WECONSERVEPA.org was suggested as an organization that could provide advice in these matters.
7. **EAC budget** EAC has a \$4,000 budget committed to it by the Borough Council for this calendar year. Profits from the Native Plant Sale have been historically returned to the Borough. Borough Council may elect to allow the EAC to use the profits and any donations for initiatives selected by the EAC. Leonard stated his

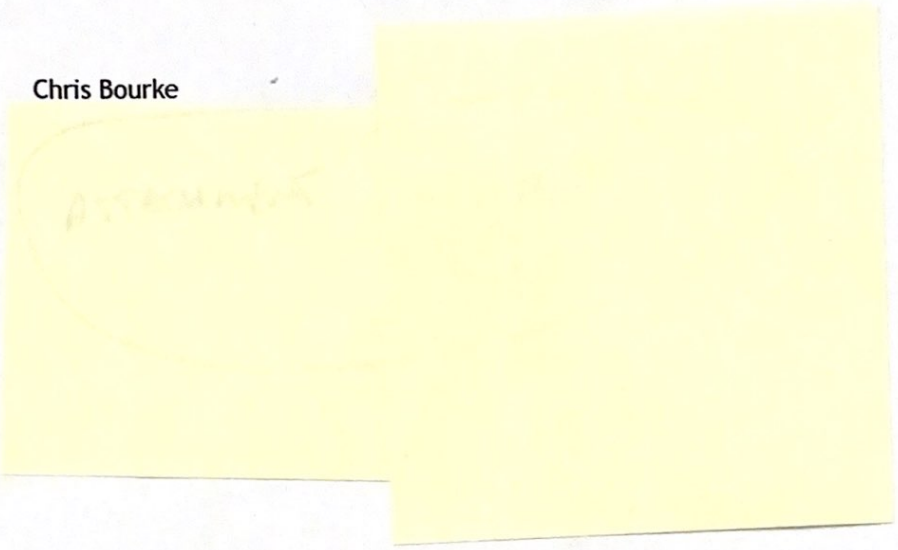


understanding that the EAC has discretion as regards to expenditures of the \$4,000 allocated to the EAC. Paula will keep track of the profits and donations. Other approved initiatives are an estimated budget of \$10,000 for the kiosks (subject to approval of the designs). The Borough budget for parks and preserves is \$25,000. \$500 has already been committed to a fall planting project at the switchbacks at Saul Preserve. Donations to the Borough are tax deductible. It was requested that donors receive an acknowledgement letter. Dave will request that profit from the plant sale be available for EAC initiatives.

8. **Public Information Plan** A proposed Public Information plan was disseminated prior to the meeting. A copy of this plan is attached to these minutes. Maps and designs for proposed kiosks, information on the website and smartphone app technology to be an integral part of the plan. A motion was made to and a motion was approved by the EAC stating "We recommend to Borough Council that it approve the construction of two kiosks at a budget of \$10,000 as a part of the Public Information Plan".
9. **Adjournment** The meeting adjourned at 9:57 PM.

Respectfully submitted,

Chris Bourke



DRAFT      DRAFT      DRAFT

**Rose Valley Wildlife Preserve Public Information Plan**  
**Prepared by The Rose Valley Environmental Advisory**  
**Council (EAC)**  
**23 Feb 2021**  
**Rev 050221**



**The Wolf Tree, Saul Wildlife Preserve - Rose Valley, PA**

**Outline of Plan**

**A. Guiding Principles**

1. Purpose
2. Philosophy
3. General to Specific organization
4. Durable
5. Effective communication
6. Information exchange interfaces
  - a. Kiosk
  - b. Points of Interest
  - c. Wayside Markers
  - d. Website

**B. Saul Wildlife Preserve - Specifics**

1. Information on Kiosk



- a. Map and POIs
  - b. Rules & Notices
  - c. Education
  - d. Public Space
  - e. Structure
- 2. Points of Interest
  - 3. Web site articles
  - 4. Trail Navigation aids

#### C. Chadwick Wildlife Preserve – Details

- 1. Information Kiosk
- 2. Points of Interest
- 3. Web site Articles
- 4. Trail Navigation

#### A. Guiding principles

1. The purpose of the Public Information Plan is to enhance the experience of Preserve users while protecting the natural resources in the Preserves. The goal is to strike a balance between Human use of the preserves while protecting the natural elements of the preserves so people and nature will live well together. It is believed that with good communication, the users of the park will be able to navigate safely with minimal impact to nature itself. People come to the Preserve for many reasons and the experience can improve quality of life in many ways. Some come for personal exercise. For some, it is a place to exercise their pets. For others, it provides an opportunity to learn about nature. It can be a place to meditate, decompress and regroup from the pressures of everyday life. Reconnecting with nature is healthy for our minds and spirit. The goal of this communication plan is to facilitate that healthy interaction. Through this plan, we strive to make the Preserve's resources available on many levels to meet each user's needs on their own terms.
2. The Public Information plan will provide the essential minimum information to enable users to be safe and to access the preserve without negatively impacting the



natural features they have come to enjoy. The plan will provide opportunities to explore which will build greater appreciation. Hopefully the relationship between visitor and Nature will be friendly, respectful and will build in commitments of users to take a personal interest in our preserves. We will make information available in a friendly way. We will communicate in ways that do not detract from the natural setting, but are informative while also being attractive and where possible, are delivered in ways that reflect our historic Arts and Crafts heritage.

3. We will avoid the use of consumables and utilize natural local materials where possible. We will provide entry points for understanding. We will minimize the written word where a symbols or pictures will do. We will avoid lengthy explanations of tiny text. Instead, we will encourage users to observe and explore the preserve on their own terms. For those who want it, we will provide access to the Borough web site which will contain detailed information as well as paths to explore subjects in greater depth.
4. Signage should be durable and maintenance free without appearing overly institutional. Home made with love is good. Signage should be weather resistant. Where information is temporary or subject to change, laminated paper is preferred.
5. Communication needs to be two-way to be effective. Therefore there should be opportunities for public input and interactivity. Information will be conveyed in a variety of communication modes: pictures, words, diagrams, open ended questions and inspiring quotes. The communication needs to be alive, dynamic, engaging, and not static. There should also be options to update and change displays as events require and as the seasonal interests change. Users will be given means to explore information and apply it to what they experience in nature.
6. The points of information exchange will be as follows:
  - a) Information Kiosks will be placed at the two trail



heads - Saul Preserve at the Parking lot, and Chadwick Preserve at the intersection of the Minquas trail and the Meditation trail. The Kiosks will be positioned so that people can look at the information before committing to the trails. The kiosks serve as a meeting point, a point of planning, education and as a point for users to learn about any safety issues. The Kiosk will each have five components of information, tailored to the specific preserve: 1) Map of the Preserve, 2) Index of Points of Interest (POIs) with guidance on how to access additional information if desired 3) Rules, Regulations and Official notices 4) Educational information like: what's in season , Invasives to pull, etc. 5) Interactive public space for public input and engagement. This area would include things like notices for volunteer opportunities, Personal notices like "Lost my glove. Please contact ...", Surveys like animal sightings, pictures of unusual things sighted, etc. The Kiosk design will be similar to what is currently found at the Rose Valley Museum, the Rose Valley Bus Stop and The Rose Valley Swimming Pool.



Rose Valley Bus Stop



Rose Valley Swimming Pool





Rose Valley Museum

- b) Points of Interest (POI's) will be called out at points along the trails. These will correlate with the directional map which is on the Trail head kiosk. The particulars for each POI will not be printed out on the Map or the trail marker. Instead, each POI they will be identified with a number plate and QR Code. Using their smart phone, the user will be able to access the internet and bring up the applicable POI write up on the Borough web site. The POI markers will be mounted on 4x4" pressure treated posts. The aluminum metal plate will be square, anodized brown with white numbers. Marker posts will be 3 ft. high with a 30 degree slope on the post's top. The plate will be oriented to read when looking in the direction of the POI.
- c) Wayside trail markers will be located at confusing intersections to assist hikers. The markers will use a color code that corresponds to the trail head Kiosk map. The design will be a pressure treated 4x4, 3 ft. above the ground with 3" color coded metal disks attached to the faces.
- d) The Borough EAC Web site will contain the detailed information about each preserve. It would contain Contact information and links to other sources of information such as the EAC Facebook Page. Web site information will be organized from general to specific, so that a user can drill down into more detail as they wish. The web site would be available to be used by hikers at any time, before

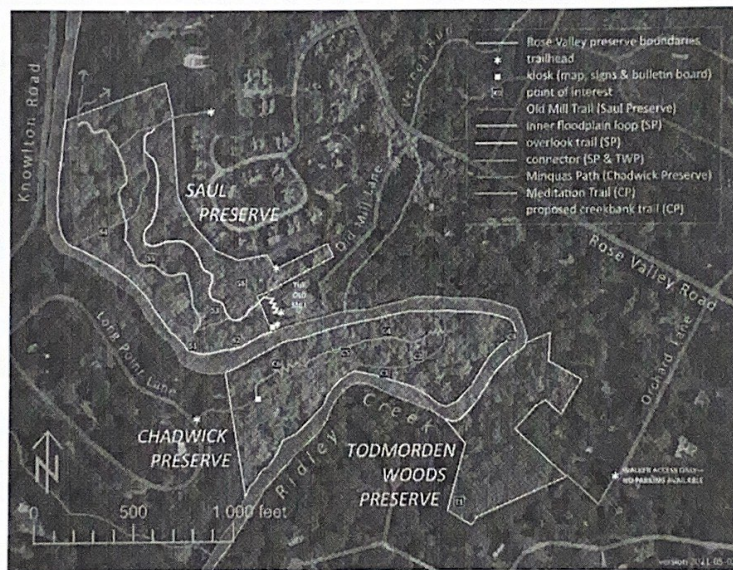


arriving at the preserve to plan their outing, at the trailhead kiosk or out on the trails themselves. The Web site would be designed, created and maintained by Rose Valley volunteers.

## B. Saul wildlife Preserve - Specifics

### 1. Information Kiosk

- a.) A draft of the map of the trails has been created. It shows the trails and numbered POI's. Names on some of the trails have been finalized. The map will initially be printed on laminated paper, and placed in a 24x24 inch, weatherproof Bulletin Board (BB) cabinet. In the same cabinet the names of the POI's are listed. A statement will appear on the display directing people to refer to the Borough web site for additional information about the POIs. A picture of a typical enclosed bulletin board is shown below. Also please see the Draft map of the Trails which would appear in a bulletin board.



Map of Rose Valley Preserves

### Key to Points of Interest (POI's)

- |                      |                                   |
|----------------------|-----------------------------------|
| S1. Old Mill Dam     | C2. Indian Chief Rock             |
| S2. Old Mill Raceway | C3. Pools & Rapids                |
| S3. Quarry           | C4. Seekers After Knowledge ruins |
| S4. Saul's Allée     | C5. Listening Point               |



S5. Wolf Tree      C6. Spy Rock  
C1. Deer Enclosure      T1. Specimen Tree

b.) Rules and public Notices will be shown in a second BB cabinet. At this time, there are several rules signs posted on trees in the Sanctuary. These will be removed and combined into one list which will be placed in the cabinet. Other notices such as COVID-19 advisories, Deer hunting notices, etc. would be in this space. Eventually, we will redesign the Rules sign to use symbols and more friendly language.

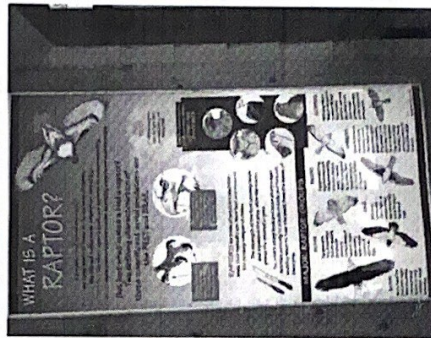


c.) The third BB cabinet will contain educational material. This will include a brief history of the



preserve dating from its geologic origins, its uses over time up to the present. It will highlight the unique features of the Preserve, ecologically as well pointing out some of the traces of historical ruins. It will include a seasonal component which highlights things to observe during each of the four seasons. Examples will be shown with pictures and captions. Users will be directed to a web address for more in-depth information. There should be open ended questions and challenges like, "See if you can find rows of trees in the sanctuary that are evidence of land's prior life as a tree nursery."

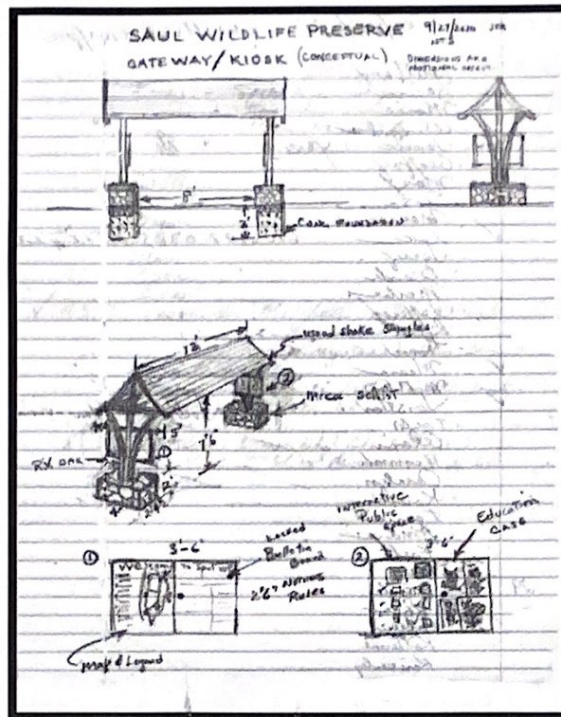
Shown below is a Typical Educational display used in another park:



- d.) The fourth Bulletin board will be weather proof but unlocked. This will be for public interaction. Notices of current events will be posted and pictures of sightings will be attached on a cork board. There will be a picture of volunteers working on the trails and the owl house installed in a tree last fall. A sample hand written note could be posted like "Lost car keys on Old Mill trail. Please contact Bill Smith 484 123 4567 2/21/2021." A notice on the board will read "Personal notices will be removed after 30 days. No commercial notices please."
- e.) The Kiosk Structure would be a unique gateway at the trail head near the parking lot. The existing trail map which is out of date and in poor condition would be removed. The estimated cost for the new gateway/kiosk with bulletin board cabinets would be \$6,000. This estimate does not include any costs for professional graphic design services. The price can be reduced by 30% if construction is done by volunteer labor. Please see the below sketch of a possible Arts &



Crafts style structures that could be used as an entrance as well as a kiosk. If the concept is approved, more detailed architectural plans will be prepared for construction.



## 2. Points of Interest trail markers

- a.) The Old Mill water works should have a Marker placed near the old sluice way. The marker will have a number reference which correlates to the Preserve map and can be used to find additional details on the Borough web site. The Website should have a schematic of the dam, the sluice way, the control gates, the old mill water wheel and the location of the machinery in the old mill. There should be a reference to what is believed to be the quarry for the dam's stone. The article will describe the type of things that were produced in the mill over the years. Links will be shown that will lead to more information about mills in the area and explain the importance of water for power and transportation.
- b.) The Allée should have a marker place in the center of the row of trees that bisects the Preserve. The Web site will describe the origins of the trees as part of the tree nursery owned by Maurice Saul who donated the property for the preserve. The web page will show pictures of some of the specimen trees in the preserve: Sycamore, Oak, Black walnut, big leaf magnolia, tulip



poplar, Amur Cork, Zelkova, Hickory, sugar maple, birch, Persimmon, sweet gum, beech, southern magnolia, white pine, etc. Pictures and other aids will help the user to identify the trees in the Preserve.

c.) The Wolf Tree will have a POI marker. Its web page description will Picture the tree as it appeared in the 1920's when the land was cleared in the preserve. It will explain why a wolf tree develops its characteristic "Medusa" type branch structure. This age of the tree will be estimated and the way the world was when the tree first started growing can be explored on Wikipedia.

d.) The Overlook rest spot will have a POI Marker and a bench. The Website information will explore the geology of the Preserve, explaining the origin of the flood plain, the importance of the riparian zone, and the differences in ecosystems on the hill side vs. the flood plain and the interdependence of all elements of an ecosystem.

3. The website articles for the Saul Preserve will be part of the Rose Valley Borough's EAC webpage. The articles will be written with a table of contents which allows the user to access specific paragraphs in the document. All the topics discussed at the information kiosk will be repeated on the web site with additional detail, amplification and resource information. Specific hazards or warnings would be highlighted for users such as warnings about Ticks, rabid animals, yellow jackets, etc. Current events would be listed with sign up and contact information. As much as possible, a user should be guided directly to a page or paragraph of the site when they query a POI number, perhaps using a QR code associated with a POI. The web site would be used during both trip planning and while on the trail. The site should have robust linkages for users to be able to explore subjects in greater details such as Invasive, tree identity, History of Mills in Delaware County, healthy ecosystems, indigenous people of Delaware County, other groups and organizations associated with nature activities, etc.

4. Trail navigation will be facilitated first by having a map of the preserve on the Information Kiosk. Users would be able to take a picture of the map to carry with them on



their hike. This map will also be available on the website for down loading, reference and planning purposes. In addition to the map, the trails will be marked with trailside colored markers as previously described.

C. **Chadwick Wildlife Preserve.**

1. **The Information Kiosk** located at the intersection of the Minquas Trail and the Meditation trail will have all the same elements as the Saul Preserve, but on a smaller scale. The Kiosk will have two @ 24x24 inch bulletin board cabinets. The Map, POIs, Rules, Notices, Educational material and public space will all be included. The structure will have a design similar to the Saul entry way kiosk except that it will only have a single pier and bulletin board with a roof over it. The type of structure is illustrated in the following photo of a kiosk in Glen Providence Park, Media PA. The estimated cost is \$3,000 not including graphic design. The cost could be reduced by 30% if the construction is done by volunteers.



Trail Kiosk Glen Providence Park Media,  
PA

2. **Point of Interest** markers will be installed in a fashion similar to the Saul Preserve at the following locations:
  - a. **Spy Rock**. The marker will tell the history of the look-out position and its geologic origins. There will also be reference to the other major rock outcroppings of



Granite Gneiss on the point.

- b. Meditation trail at the Partridge Berry Patch. The POI will explain the medicinal qualities of the Partridge Berry and also describe other forest floor herbs found on the point such as various ferns, lichen, spotted wintergreen, Solomon's seal, mosses. The slow growing, state bush, the Mountain laurels will be highlighted and how they are thriving in this higher, rocky, well-drained soil. The stands of various oaks and the tenacious beech tree roots that adapt to the rocky terrain.
- c. A listening point will be marked at a location where the hiker can see and hear the creek running in two directions, East and West. The article will discuss the reason the ridge still stands and about how by freak of nature, the last glacial advance stopped just 50 miles north of this spot, leaving it to erode on its own timetable with just the forces of roots, water wind and ice wearing it down. Its remote location protecting it from the advanced of civilization.
- d. There will be a POI marker for the Minquas Trail which is believed to have crossed the point. One can speculate that this point held as much of a magical fascination for indigenous people as a sacred place as it does for us today. There should be an explanation of the history of the Minquas Indians and the early Dutch traders who plied these trails from the Delaware up to the upper reaches of Pennsylvania and beyond.
- e. There will be a POI marker at the ruins of the SAK cabin. The article will discuss the use of the point by early residents of Rose Valley as a place to picnic and commune with nature. The Old suspension bridge will be pictured.

### 3. Web site Articles (TBD)

- 4. The trails will be marked as necessary to prevent confusion in a manner similar to that discussed for the Saul Preserve.